



Third Party DVR Integration App-note

Contents

1. Introduction.....	2
1.1. Model and Firmware.....	2
1.2. Requirements.....	2
2. Device Addition and Configuration	3
2.1. Introduction	3
2.2. Add a Camera in CathexisVision	3
3. Conclusion	6

While Cathexis has made every effort to ensure the accuracy of this document, there is no guarantee of accuracy, neither explicit nor implied. Specifications are subject to change without notice.

1. Introduction

This document will detail how to integrate CathexisVision with a third-party DVR. Functionally, this integration will entail the triggering of standard CathexisVision Events, based on the triggers from the third-party DVR.

Third-party DVRs are added to CathexisVision as an IP camera with multiple video inputs in relation to the number of channels on the DVR.

1.1. Model and Firmware

The following third-party DVR model (in this example, Dahua DVR model) and firmware were used to test this integration:

Manufacturer:	Dahua
Model:	DHI-XVR4104HS
System Version:	3.218.0000002.1
Web:	3.2.7.91796

1.2. Requirements

- CathexisVision 2020.4 and later
- Win 10-64bit and later, Win Server 2008 R2 and later.
- Minimum 4 GB of RAM required.

A NOTE ON CAMERA CHANNELS

The CathexisVision software packages have **limits on camera channels**. A multi-head camera is physically a single device (camera) but it **requires a camera channel for each one of the internal cameras**. The same applies to an encoder: a 16-channel encoder will account for 16 camera channels on the CathexisVision software, even though it is a single device.

USEFUL LINKS

To view **tutorial videos** on CathexisVision setup, visit <https://cathexisvideo.com/resources/videos>

Find answers to Cathexis **Frequently Asked Questions**: <https://cathexis.crisp.help/en/?1557129162258>

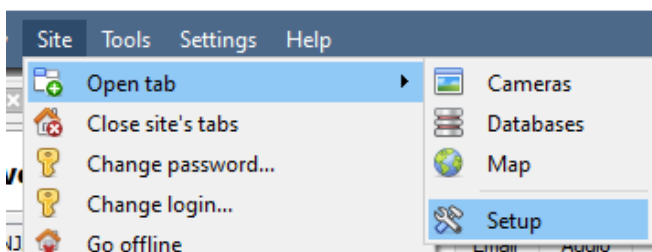
2. Device Addition and Configuration

2.1. Introduction

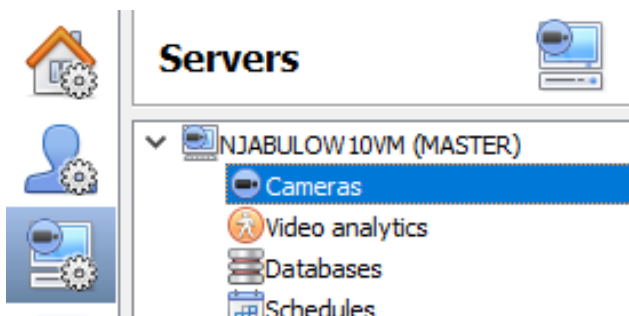
This section will detail the procedure for setting up the two systems to effectively communicate with each other. The Dahua DVR has been used as an example in this instance, and other DVRs may have a similar setup.

2.2. Add a Camera in CathexisVision

1. To add a camera in CathexisVision, go to **Site / Open tab / Setup**.



2. Go to **Server / Server name / Cameras**.



3. Click New to add a new camera.

4. Choose the **driver** and enter connection details. The **video input field** is for the camera **channel number**.

The screenshot shows the 'New camera' dialog box with the 'Camera connection' section selected. It contains two radio buttons: 'Add new camera' (selected) and 'Add new video input to existing camera'. Below are fields for Driver (Dahua), IP address (192.154.15.76), Video input (1), Port (Default), Login (admin), and Password (masked with dots). A 'Scan' button is next to the IP address field.

5. If successful, **give the camera a descriptive name**, then click Next.

The screenshot shows the 'New camera' dialog box with the 'General settings' section selected. It contains a text input field for 'Camera name'.

6. **Configure the camera as per the site specification**, then click OK to save when done.

- Note: When adding a new camera of the same DVR it is important to select the **Add new video input to existing camera** option and then choose the correct video input channel.

This screenshot is similar to the first one but shows the 'Add new video input to existing camera' radio button selected.

- When adding a PTZ camera, tick the **Enable PTZ** option to be able to use the PTZ function.



3. Conclusion

This app-note was designed to deal specifically with this integration. For further information about the CathesisVision software, consult the main manual (<http://cathesisvideo.com/>). For support, email support@cat.co.za